

# Lincolnshire Learning Disability Partnership Newsletter April 2024

**VoiceAbility**

## Out and About In Lincolnshire



## Teamwork over teams



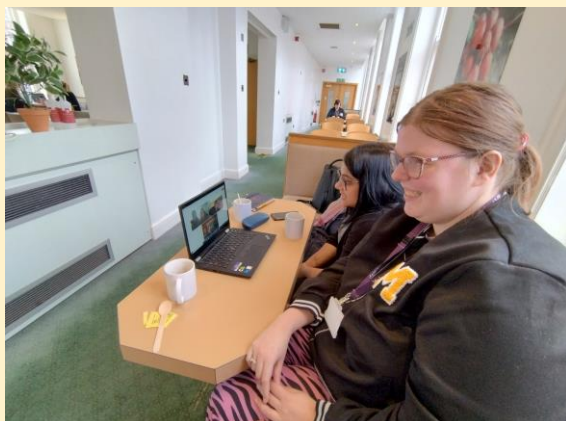


# Planning for Voices For All

We met with Bindya from Mencap to plan for the voices for all meeting.



Bindya was joining us to talk about their workshops. They help people to understand what makes a good group and how groups can come together to make positive changes.



She called this  
'Activism'

Unfortunately, Bindya was not able to join us on the day.

# Voices For All



We talked about what makes a good group.

We also spoke about what the Learning Disability Partnership is and what it does.

People gave us good feedback.

It was great to hear what people thought the Learning Disability Partnership does.

They had some good ideas on how to help spread the word and get involved.



# Staying Safe Work Group.



The staying safe work group has been looking at safeguarding leaflets. We gave feedback to the council so they can make them more accessible.



We are working with the Equality, Diversity and Inclusion team at Lincolnshire Police.



As a group we promote awareness of what life is like living with a disability, help with training, and we are giving feedback on the Pegasus scheme.



This scheme is being updated so that it is easier for people to use.

Our feedback has helped improve services.



Keep up the good teamwork everyone.

# Healthy Lifestyle Work Group

## Sensory Bags

Sensory bags have been created to help people when they go into accident and emergency departments at Lincolnshire hospitals.

They are to help reduce worries, anxieties and sensory overload while waiting.

They are navy blue bags. Inside them are things like ear defenders, adult colouring books, a chewable bracelet, a face mask, stress ball and an easy read leaflet.



## Hospital Passports

### All About Me

Feedback has been gathered from different teams to include children, adults, people with autism, learning disability, high anxiety, and dementia. This will be used to update the All About Me, hospital passport booklet.

The hospital passports will then support people with different needs and promote awareness to staff.

A sample of the 'All About Me' hospital passport form. The form is white with a maroon vertical bar on the left side containing the text 'All About Me'. At the top left is a lightbulb icon with a brain inside. The form contains several fields: 'My name is:' followed by a rectangular box; 'I like to be called:' followed by a rectangular box; a rounded rectangular box with the text 'Please add a photograph of yourself here'; the title 'All About Me' with the website 'www.allaboutme-lincolnshire.org.uk'; a paragraph stating 'This book contains key information about me that will be helpful in any health or social care setting.'; a 'Last updated (date)' field with a box containing 'DD/MM/YYYY'; and a final instruction: 'Please keep this book with me at all times and ensure that I take it home with me.' At the bottom, it says 'United Lincolnshire Hospitals NHS Trust'.



# Communication Work Group

## Maturity matrix

In our communication work group, we looked at something called the maturity matrix for LCC.



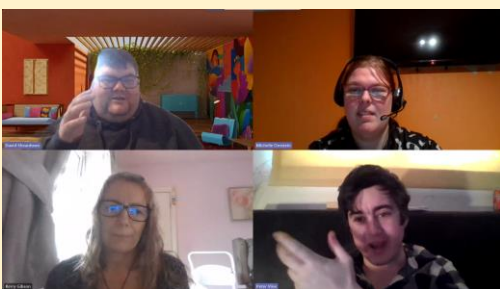
It is part of the Integrated Care System (ICS). We are helping to make it easier to understand.

The matrix helps the council to measure what they are doing well and what they need to improve.

It is a large chart that details the joint guiding principles for the ICS.

These are a set of rules or guidelines that people should work to. You can find out more on the next page.

KEY AREAS	DETAIL	Not yet agreed on approach	Plans in place	Established	Mature	Exemplary
Co-production	Co-production with people with lived experience, including family carers, at the centre of all our work from beginning to end for children, young people and adults who have a learning disability or who are autistic. We use the best outcomes for people and their families when they, and their family supporters, contribute to all our partners.					
Reducing health inequalities	Focus on early identification and prevention Proactive approach to anticipating health needs at different life stages All partners supporting delivery of learning disability annual health checks and health action plans Reasonable adjustments: identified, shared, anticipated and best effort made to meet them in planning and service delivery Proactive approach to physical and mental health and wellbeing which is holistic - physical health checks at least annually Learning from Laidbairt reviews and action to tackle causes of preventable deaths					
Risk minimisation	Person-centred, human rights, personalisation, choice, flexibility, transparency					



KEY AREAS	DETAIL	Not yet agreed on approach	Plans in place	Established	Mature	Exemplary
Co-production	Co-production with people with lived experience, including family carers, at the centre of all our work from beginning to end for children, young people and adults who have a learning disability or who are autistic. We use the best outcomes for people and their families when they, and their family supporters, contribute to all our partners.					
Reducing health inequalities	Focus on early identification and prevention Proactive approach to anticipating health needs at different life stages All partners supporting delivery of learning disability annual health checks and health action plans Reasonable adjustments: identified, shared, anticipated and best effort made to meet them in planning and service delivery Proactive approach to physical and mental health and wellbeing which is holistic - physical health checks at least annually Learning from Laidbairt reviews and action to tackle causes of preventable deaths					
Risk minimisation	Person-centred, human rights, personalisation, choice, flexibility, transparency					

Please click on the picture below for an easy read guide on how different care systems should be working together to improve the health and lives of people with a learning disability and autism.



**NHS CARE**



## JOINT GUIDING PRINCIPLES

How partners in **Integrated Care Systems** should work together to improve the **health and lives** of people with a learning disability and autistic people

# Working together with Lincolnshire County Council through the Learning Disability Partnership Board.



We have been working with the Learning Disability Partnership Board.



We have met with Louise from the Council a few times.

We talked about what life looks and feels like for some people with disabilities.

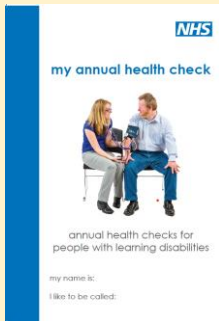


We are helping them to make the right information more accessible.



## The campaign to get my learning disability annual health check

By Peter Vine, Speak Out Leader for Lincolnshire.



A work colleague, David was talking about annual learning disability health checks, and from this conversation, I discovered that I had not had one.

When I first rang the doctors to ask about booking my health check, the lady did not know what I was talking about.

She said she didn't think they do annual health checks there and that she would look into it and email me.

I did not hear anything back from her.

I talked about this at our healthy lifestyle meeting where Sue, the Physical Health Lead Nurse for People with learning disabilities, NHS said she would look into things for me.

She came back to me to let me know that the lady was right in that the practice themselves are not currently doing the health checks.

They are done differently in that area.

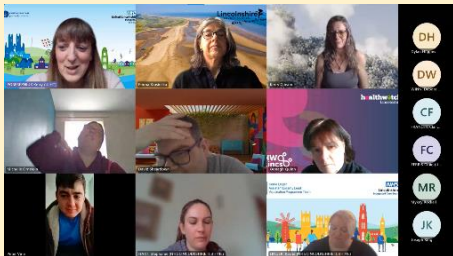
The Primary Care Network (PCN) is responsible for doing them. They are reviewing when these will start, and she would update me when she knew more.

I did not hear anymore.





After a couple of months, I rang up again and they told me I was not on the learning disability register so not entitled to an annual healthy check.



Thinking this is not right, I asked for help at the next healthy lifestyle meeting. The NHS health liaison nurse took some details and looked into this for me.



After 2 years of speaking up , I managed to get back on the learning disability register and got an appointment for my learning disability annual health check in February 2024.

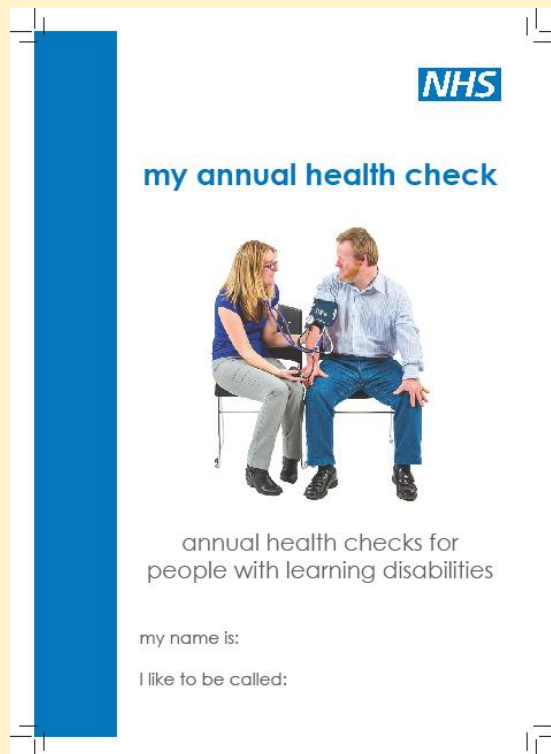
I was seen by Sam, who said she was a pharmacist.

She was very understanding about learning disabilities. She told me how long it would take before we started and what was going to happen before we did anything.

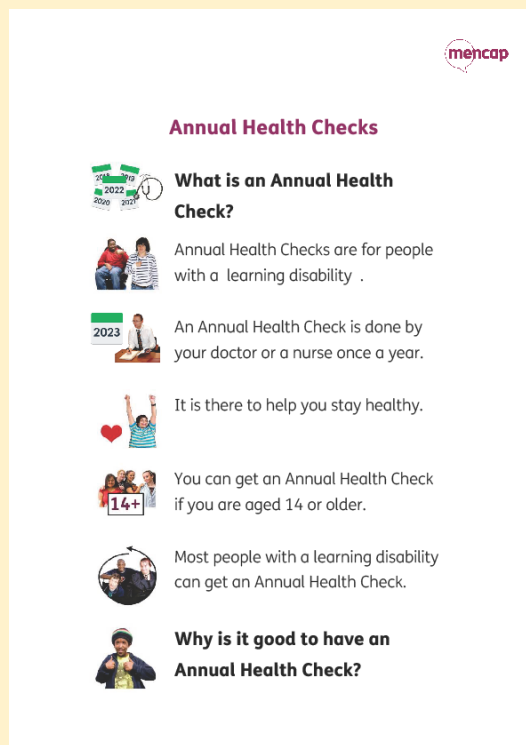


I am happy I managed to get my learning disability health check and I would like to thank David and everyone for their help.

Please click on the annual health check booklet below for a PDF version.



Please click on the Mencap booklet below for an easy read on what an annual health check is.



# Create a new Voices For All Logo



We would like your help to design a new logo for the Learning Disability Partnership, Voices For All



This is the logo we are using now.



Do you have any ideas you would like to share or would you like to help design a new logo.

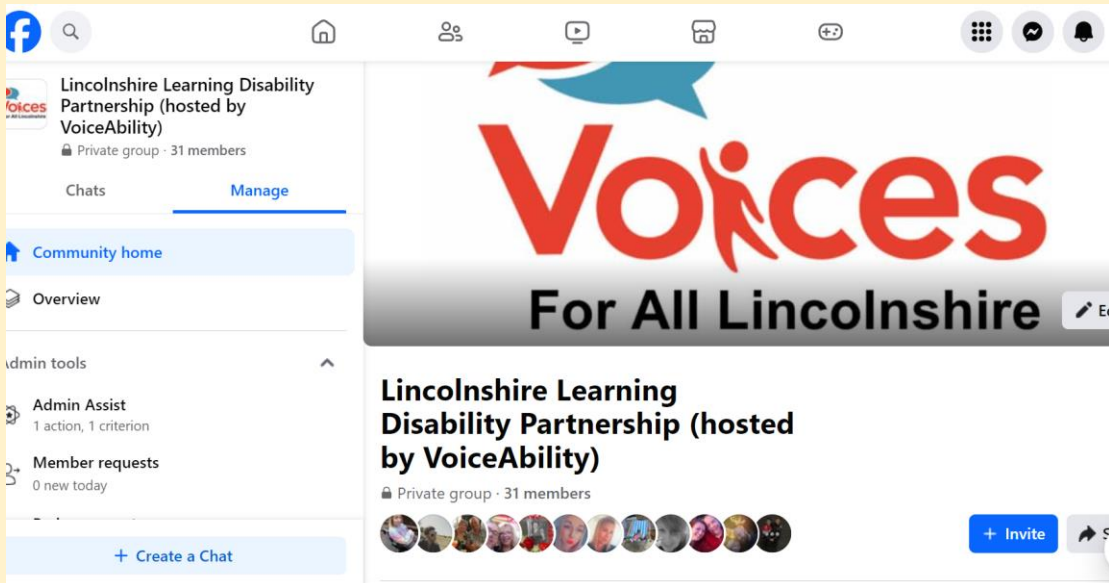


Please contact Kerry:

phone 07557851487

Email:  
[kerry.Gibson@voiceability.org](mailto:kerry.Gibson@voiceability.org)

# Lincolnshire Learning Disability Partnership, Facebook.



[Lincolnshire Learning Disability Partnership \(hosted by VoiceAbility\) | Facebook](#)

We have a new Facebook group for Lincolnshire Learning Disability Partnership.

Please click the link above and share with anyone who may be interested in sharing information and linking up with different groups for people with a learning disability in Lincolnshire.

Thank you

## Speak Out Leader Job Vacancy With VoiceAbility in Lincolnshire



Would you like to join our team?

Do you like to speak up for yourself and other people?

Would you like to help make things better for people with a learning disability in Lincolnshire?




Would you like to be involved in work group meetings and meet other people?



Please click the link below to find out more information and how to apply.

<https://voiceability.current-vacancies.com/Jobs/Advert/3465964?cid=1938&t=Speak-Out-Leader>



Connect  
to Support  
Lincolnshire

Provided by  
**LINCS** **2** **ADVICE**

[lincolnshire.connecttosupport.org](http://lincolnshire.connecttosupport.org)  
0300 303 8789

Information and advice for all residents who are looking for support in the community. Search for information online via the sections below. Contact us by telephone, live chat, or email.

 <p><b>Information and advice</b> Information to help you manage your wellbeing and plan for your care and support needs.</p>	 <p><b>Home care agencies and care homes</b> Find home care agencies and residential and nursing homes in your area.</p>
 <p><b>Provider directory</b> Information about providers of services in and around Lincolnshire.</p>	 <p><b>Activities and events</b> Find a wide range of activities and events in your area.</p>

Lincolnshire **NHS**

Lincolnshire  
COUNTY COUNCIL  
*Working for a better future*



Connect to support is an online information and advice library for adults in Lincolnshire. It has a section for carers.

Check out the link below:

[Support and advice | Lincolnshire  
\(connecttosupport.org\)](http://lincolnshire.connecttosupport.org)