

Lincolnshire Learning Disability Partnership Board Minutes: Monday 13th January 2025



Who was at the meeting:

Laura Hughes – Carers First
Rebecca Rawdon – Children's Services, LCC
Jo Tubb, Adult Care, LCC (Chair)
John Waters, Adult Care and Community Wellbeing, LCC
Laura Blaine, Public Health, Adult Care and Community wellbeing, LCC
Claire Frances – Lincolnshire ICB
Kerry Gibson – VoiceAbility
Peter Vine – VoiceAbility
David Sheardown – VoiceAbility
Michelle Ornstein - VoiceAbility
Ananda Bailey – Just Lincolnshire, YMCA.
Louise Olley – Adult Care and Community Wellbeing, LCC
Victoria Sleight – LPFT (for her item only)

Apologies:

Jane Mason – Everyone
Justin Hackney – LCC
Carol Carlton – Carer Rep
Rosemarie – Speak Out Leader

1. Welcome and Introductions

Jo asked everyone to introduced themselves and welcomed Victoria to the Board as a guest.

2. Mental Health, Dementia, Learning Disability and Autism (MHD/LDA) Alliance

Victoria introduced herself to the Board and explained she had come to the meeting to talk about the Mental Health, Dementia, Learning Disability and Autism (MHD/LDA) Alliance.

She also talked about wanting to work closely with the Learning Disability Partnership Board.

Lincolnshire Learning Disability Partnership Board Minutes: Monday 13th January 2025



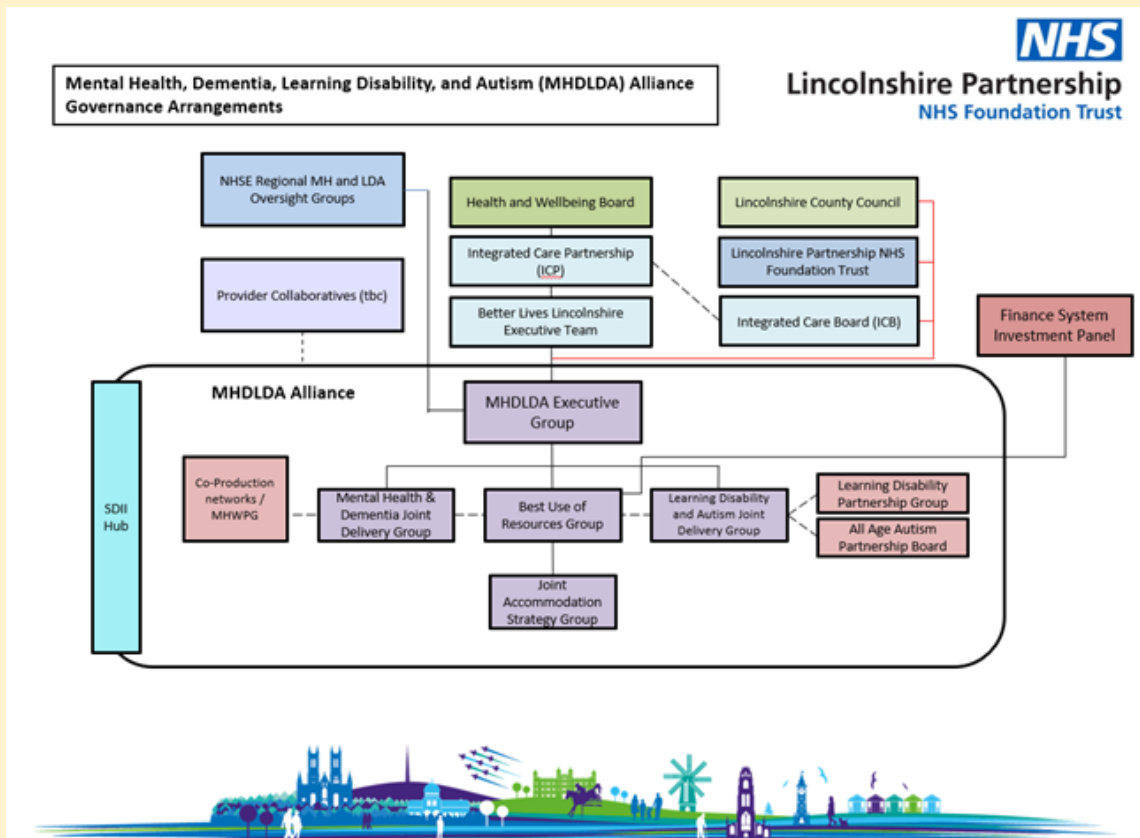
The Alliance has been in place for a few years now and include people for example from Lincolnshire Police, Lincolnshire County Council, LPFT, Office of the Police and Crime Commissioner, the ICB.

It is all age meaning we work for children, young people and adults of all ages. It's been set up to focus on mental health, dementia, learning disability and autism and the aim is to support each other to work together to achieve the best for people in Lincolnshire.



The MHD LDA reports to the Better Lives Lincolnshire Team which includes the Executive Leaders (the big bosses) and people with lived experience.

Victoria shared the current governance structure with the Board and pointed out where the Learning Disability Partnership Board is – see the red arrow.



Lincolnshire Learning Disability Partnership Board Minutes: Monday 13th January 2025



Victoria also shared information about Our Shared Agreement and some of the work that has been achieved to enable big mental health projects to be co-produced.

Please see separate presentation.



Victoria explained that she is here today to find ways to work better together and make sure the way we work and co-produce across MHDLDA is the same, particularly the good things.



An example of this is where people with experience of mental health issues are involved in decisions about how money is spent. She went on to explain that they give about £1.5 million to community groups and organisations.

Victoria asked for ideas about how we can work together.



The Speak Out Leaders talked about their experience of the No Wrong Door event and explained that they felt it was not inclusive.

They suggested that meeting before any big event would to run through things and make suggestions would be helpful.



Victoria said this was a good idea and will do this for future events. The Board acknowledged how important it is to feel comfortable in meetings as this helps you to engage, get the best out of meetings.



Laura shared an example of Mental Health training that had been co-produced. Laura also suggested that this work needs to link into the Learning Disability Big Plan.

Jo explained that we have reach to people through the network but also through our commissioned services.

Lincolnshire Learning Disability Partnership Board Minutes: Monday 13th January 2025



John said that Foundation 1 of Our Shared Agreement is most challenging.

This is Being Prepared to do things differently.

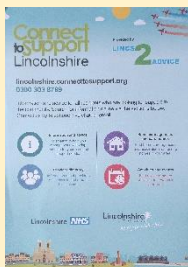
He would like to see more opportunities people with lived experience being involved in decision making about funding.

John has agreed to be invited to the VCFSE strategy groups moving forward.



Laura asked if Carers First are included in the Alliance. Victoria explained that they have sector representation as part of the Voluntary, Community, Faith and Social Enterprise (VCFSE) Strategy.

Action: Victoria, Kerry, David, Peter and Michelle to meet to talk about shared opportunities and opportunities to increase co-production.



3. Actions from last meeting – these are outstanding.

- Rachel to share information about Community Connector sessions which cover the county with Kerry.
- Kerry and Louise to contact Ian on behalf of the Board to ask Ian to consider how they are going to make sure people don't lose out by leisure centres becoming cashless.



4. Transforming Care Update:

Claire provided the following update TCP Governance Meeting was held last week. We avoided escalation but it was close due to the high number of people in hospital.

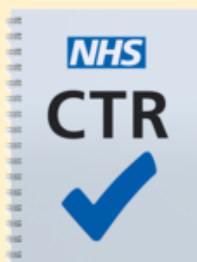
Lincolnshire Learning Disability Partnership Board Minutes: Monday 13th January 2025



Six people were discharged from hospital between 17 December 2024 and 1 January 2025

14 people have had Community Treatment Reviews between 1 December 2024 and 3 January 2025.

Dynamic Risk Register meetings have been changed to help CMHT and Crisis Teams to attend.



Jo asked about the monitoring of CTRs to see if they are doing what they are intended to do which is keep people well and out of hospital.

Action: Claire to bring information to the next meeting that helps to explain this including those who have been admitted and not had a CTR.



There are currently 30 people with LD and/ or Autistic in hospital. 14 of these people are in low or medium secure.

5. LeDeR Update:

Claire presented the key findings from the LeDer Annual Report, these were:

- There were 62 adult notifications received in Lincolnshire between January 2024 and November 2024. A decrease of 7 from 2023.
- The top 3 causes of death for people diagnosed with a Learning Disability and/or autism in Lincolnshire were Aspiration Pneumonia, Cancer and Cardiovascular Disease.



Lincolnshire Learning Disability Partnership Board

Minutes: Monday 13th January 2025



- 61% of deaths occurred in a hospital setting. An Increase of 10% from 2023. Deaths in a care home setting decreased from 25% in 2023 to 13% in 2024.
- The 2 highest percentage of deaths per population in Lincolnshire were North Kesteven and Lincoln, more than double that of some districts.
- More than 6 out of 10 of those who died in Lincolnshire with a LD and/or Autistic died before they were 65. This compares to around 1 out of 10 in the general population.
- 100% of people who died in 2024 in Lincolnshire identified as "White British".
- The median age of death for people with a Learning Disability or Autistic people was 65. The average life expectancy for the general Lincolnshire population is 81.
- 50 of LeDeR reviews in 2024 were for patients diagnosed with a LD (81%). The remaining 15% were diagnosed with a LD & Autism. TCP Governance Meeting was held last week.
- Jo asked about the monitoring of CTRs to see if they are doing what they are intended to do which is keep people well and out of hospital. Yes they are also providing post discharge CTR's where there is a high risk of readmission.
- **Action:** Claire to bring information to the next meeting that helps to explain this including those who have been admitted and not had a CTR.

Lincolnshire Learning Disability Partnership Board

Minutes: Monday 13th January 2025

- There are currently 30 people with LD and/or Autistic in hospital. 14 of these people are in low or medium secure.



<https://lincolnshire.icb.nhs.uk/documents/annual-reports-and-accounts/learning-from-lives-and-deaths-leder-in-lincolnshire-annual-report-2024/?layout=file>

6. Updates from Speak Out Leaders:



Laura asked the Board if they know about the Health Inequalities Champions and offered to share information.

Action: Laura to share information about Health Inequalities Champions.

Learning Disability Friendly Practice Scheme

Kerry added that only 8 or 9 GP Practices are engaged in the LD Friendly scheme. John suggested that there may be a shared opportunity to join up with other groups about making practices Autism and Carer Friendly.

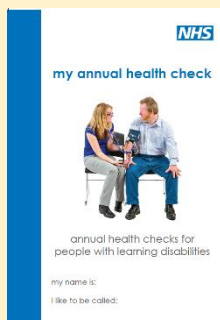


Laura explained that they are asking for help from GPs to identify carers.

Kerry identified that for people with LD it's mostly about getting good annual health checks.

John continued to feel this could be better joined up. This may also come out of the conversations with Victoria.

Action: Kerry and the Speak Out Leaders to look for shared opportunities at the meeting with Victoria.



Lincolnshire Learning Disability Partnership Board Minutes: Monday 13th January 2025



Louise asked about the All About Me Hospital Passports and whether we can provide an electronic copy to people rather than waiting for funding to print and get it on the website.

Action: David to suggest this to Kerry P and report back to the Board.



7. Any Other Business:

Jo invited members to share any other business.

Mandy said that she, with the Speak Out Leaders have produced a podcast to raise awareness of mate crime.



Mandy asked if she could share with the Board and ask members to share with their networks. The Board agreed to action.

John explained that work is underway to co-produce a new service to support people with learning disabilities to be healthy, also known as the Integrated Lifestyle Service (ILS).

He suggested this work is important for the Healthy Lifestyles Working Group.



Louise explained that Emma has attended and is contacts with the group.

Kerry and one of the speak out leaders will be attending the session this week also.



Lincolnshire Learning Disability Partnership Board

Minutes: Monday 13th January 2025



Louise explained that there is lots of engagement work happening at the moment, as mentioned already the ILS work, day opportunities, and short breaks. We are trying to make sure we spread this work out but know there have been some clashes recently. We are looking at ways to make sure this doesn't happen in the future.



Kerry attended a session about the Social Care Leaflet review where she her experience was not good. Kerry has already given feedback to Colin about the session, but the experience highlights the important of being clear about scope of the session.



Louise suggested that Kerry also let Jennifer Brereton know as she is leading the work.

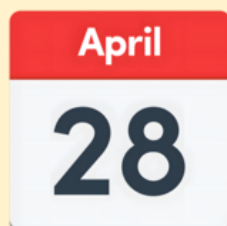
Rebecca explained that she is working with colleagues to apply for money to support people to get into employment. It's an internal bid that if successful, the team would be able to support around 3-400 people per year to get into paid employment. This includes people with learning disabilities.



Peter suggested that this team would address issues related to employers not really supporting people when they are in work, although getting the certification that they do.

8. Meeting close:

Jo thanked everyone for their contributions and closed the meeting.



Next Meeting

Monday 28th April